

ESTATE AGENTS



SEARCH AGENTS

ESTATE MANAGERS

Tel: 020 8050 8810
Email: info@ldn-r.com

Leavesden Road, Stanmore, HA7

£1,450,000



Full Description

This truly exceptional and renovated home combines modern design with practical living for a comfortable lifestyle.

A striking floating staircase serves as a focal point upon entry, creating a sense of openness and style. At the front of the house, a welcoming TV room offers a cozy space to unwind, while a guest WC and a double garage enhance convenience.

The standout feature of the home is the spacious rear kitchen, dining, and living area. The kitchen is equipped with Miele appliances, black granite worktops, and ample storage, ensuring functionality with a modern touch. Bi-folding doors connect the interior to the landscaped rear garden, which includes low-maintenance astro-turf and a putting range for added enjoyment.

Contact Us

Londinium Residential

T: 020 8050 8810

E: info@ldn-r.com

The property also features an extended driveway that can accommodate 4-5 vehicles. A reconfigured layout has created a well-proportioned master suite, complete with an ensuite bathroom and a walk-in wardrobe featuring a central storage island for convenience.

Ideally located just off the desirable Gordon Avenue, Leavesden Road is within walking distance of Stanmore Town Centre with its wide range of amenities. Stanmore Underground Station is also nearby, offering convenient access to Central London via the Jubilee Line.

This thoughtfully updated home offers a practical and contemporary living space in a convenient location.



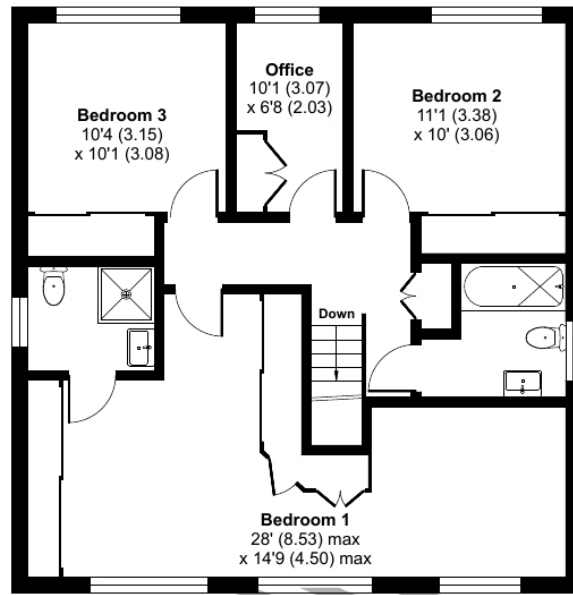




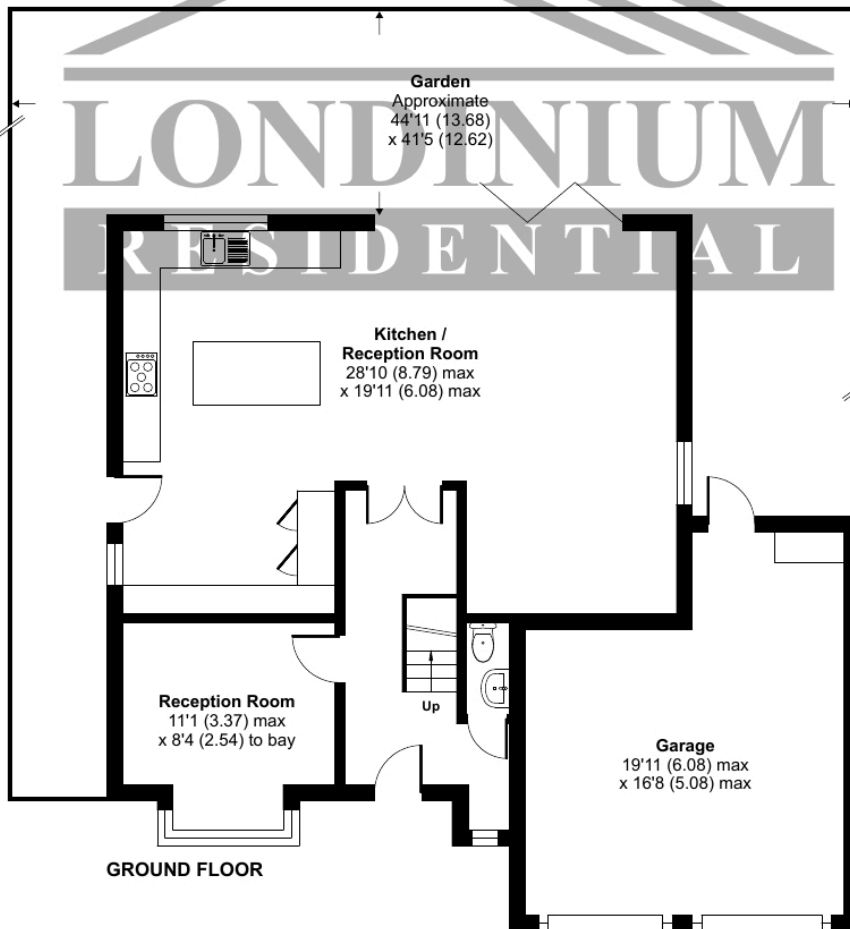
Leavesden Road, Stanmore, HA7

Approximate Area = 1959 sq ft / 181.9 sq m (includes garage)

For identification only - Not to scale



FIRST FLOOR



GROUND FLOOR



Floor plan produced in accordance with RICS Property Measurement 2nd Edition, Incorporating International Property Measurement Standards (IPMS2 Residential). © nichecom 2025. Produced for Londinium Residential. REF: 1228710